



go again

The ergonomically-arranged controls make the operator's work easier and more comfortable. The forward tilting hood gives easy access to the engine for maintenance operations.

The four-post ROPS can be equipped with a sun canopy. In addition to this, the tractor can be supplied with a cab as an option.

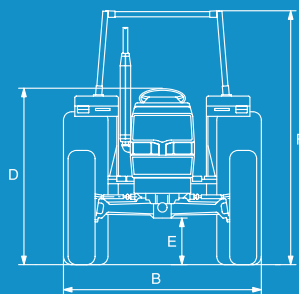
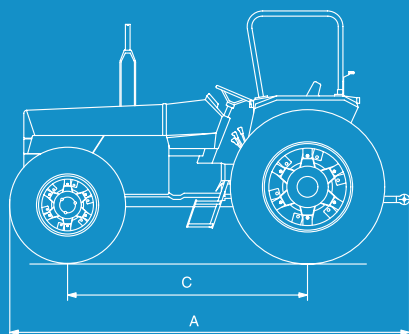
The tractor range includes one model with 2 or 4 wheel drive and three transmission options for increased versatility and maximum performance.

Landini®

Key: ● standard ○ option – not available

8860

Engine		
direct-injection Perkins engine		1104A-44
max. power ISO	hp/kW	83.6 / 61.5
max. torque	lb. (Nm)	213 (289)
displacement/nr. of cylinders	cu. in. (cm ³)	268.5 (4400) / 4
fuel tank capacity	gal. (lt)	23 (86)
Clutch		
independent dry dual clutch	in. (mm)	12 (3048)
Transmission		
base gearbox: 12FWD + 4REV		○
reverse shuttle + base gearbox: 12FWD + 12REV		●
reverse shuttle + base gearbox + creeper: 24FWD + 12REV		○
Power take-off		
2 speeds 540/750 rpm		●
2 speeds 540/1000 rpm		○
ground speed PTO		●
net PTO power ISO	hp/kW	76 / 56
4WD front axle		
4WD mechanical engagement		●
maximum steering angle		55°
Twin-Lock hydraulic diff lock		○
Brakes		
oil-bath graphite-coated rear brakes - 10 discs		●
hydraulic trailer braking system		○
Hydraulic power lift		
STD lifting power	lb. (kg)	5700 (2600)
lifting power with 2 additional cylinders	lb. (kg)	8140 (3700) ○
hydraulic flow @ remote	GPM (lt/min)	13.8 (52.3)
total hydraulic flow	GPM (lt/min)	20.2 (76.5)
Standard auxiliary valves STD / OPT		1 / 2
Driver seat and cab		
seat deluxe for cab		○
standard sprung seat		●
analog control panel		●
Weights and dimensions (in running order)		
rear tyres 4WD		18.4 - 30
A total length without ballast	in. (mm)	150 (3810)
B minimum width	in. (mm)	73.6 (1870)
C wheelbase 2WD/4WD	in. (mm)	92.1 / 91.2 (2340 / 2316)
D height to steering wheel	in. (mm)	67.7 (1720)
E max ground clearance 4WD	in. (mm)	19.9 (430)
F height to ROPS	in. (mm)	102 (2590)
F height to top of cab	in. (mm)	102 (2590)
weight (without ballast) 4WD	lb. (Kg)	6923 (3147)



Landini is a trademark of Argo Tractors S.p.A.
 via G. Matteotti, 7 | 42042 Fabbrico [RE] Italia
 t. +39.0522.656.111 | f. +39.0522.656.476
 webmaster@argotracors.com
 www.argotracors.com

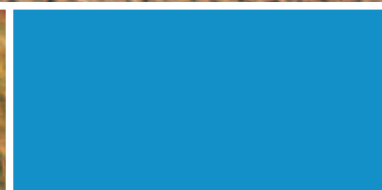
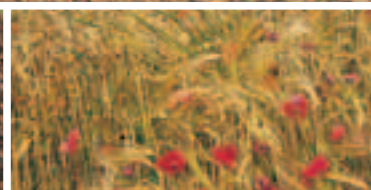
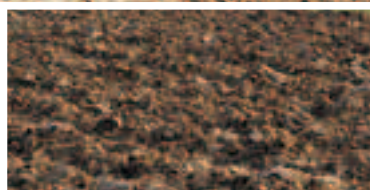

 ARG O
 Gruppo Industriale ARG O


 Landini original lubricants

Landini[®]

60 Series

8860





The warhorse is raring to

The 60 series tractors (8860) with either two or four-wheel drive are the warhorses of Landini's stable: never tamed and always raring to go, they are ideally suited for all-round use.

Featuring a simple, economy-driven design, the 60 Series tractors deliver excellent performance and functionality for maximum reliability and extended life.

The new environment-friendly Perkins 1104A series 4-cylinder engines offer high fuel efficiency, low noise and reduced emissions while delivering a high torque backup.

The driver's seat is mounted on an ample platform and equipped with a fully adjustable sprung seat to maximise the driving comfort.

**60 series: simple
and durable**



mplicity, economy, reliability
ity are the secret of its success



E



F

Ample and co

With fully ad
steering and e
the driver's seat
maximum comfo
optionally equip

A cab with
available as an o



Mechanically-operated PTO clutch lever

The mechanically-operated clutch lever enables smooth and progressive engagement of the PTO. The 1 3/8-inch rear PTO provides, in addition to the ground speed, two base speeds of 540/750 rpm and two optional speeds 540/1000 rpm for enhanced versatility. (fig. E-F)

Twin Lock: optional simultaneous front and rear diff locks

The rear and front differential locks are hydraulically engaged by pedal ensuring smooth and efficient four-wheel drive. (fig. H)

Powerful hydraulics for power lift and auxiliary valves

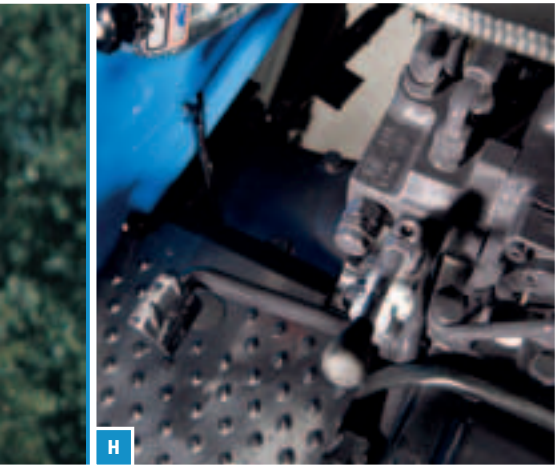
The hydraulic system provides a maximum total flow of GPM 20,2 (76.5 l/min).

Equipped with Cat. 2 three-point linkage, the mechanical power lift provides position, draft, intermix and float control functions while ensuring a maximum lifting capacity of lb. 8140 (3700 kg.) (fig. E-G)

The 60 Series tractors features one standard and two optional simple- and double-acting auxiliary valves. (Fig. H)



G



H

Comfortable driver's seat

Adjustable sprung seat, hydraulic ergonomically-arranged controls, allows the operator to work with comfort. The four-post ROPS can be equipped with a sun canopy.

Heating and ventilation is also an option. (fig. I)



I